



POWERPLUS[®]
POWERPLUS GROUP INC., USA



ALL TERRAIN CRANE
PATC1250S-II

ALL TERRAIN CRANE

TECHNICAL SPECIFICATIONS

MAIN SPECIFICATION

Overall Length: (mm) 16050
Overall Width: (mm) 2900
Overall Height: (mm) 3990
Unit weight in the travel state: (kg) 71000
Axle load (1st, 2nd): (kg) 11500
Axle load (3rd, 4th): (kg) 11900
Axle load (5th, 6th): (kg) 12000

ENGINE

Upper Structure

Model: CUMMINS 6CTA8.3-C240
Rated power: (HP/rpm) 243/2200
Engine rated torque: (N.m/rpm) 1050/1400
Max.speed: (rpm) 2200

Carrier

Model: BENZ OM502LA.III/1 (Made in Germany)
Rated power: (HP/rpm) 476/1800
Rated torque: (N.m/rpm) 2300/1080
Max. speed: (rpm) 2200

TRAVEL

Transmission: ALLISON 4500 SP (Made in USA)
Max. travel speed: (km/h) 70
Min. turning radius (m) 12
Min. ground clearance: (mm) 300
Approach angle: (°) 21
Departure angle: (°) 14
Braking distance (at 30 km/h): (m) <10
Max. gradeability: (%) 35
Fuel consumption: (L) 65

WORKING SPEED

Boom raising: (s) 90
Fully-extended/fully retracted: (s) 280
Max. swing speed: (r/min) 2
Outrigger beam (Fully extended): (s) 31
Outrigger beam (Retracted): (s) 25
Outrigger jack (Fully extended): (s) 38
Outrigger jack (Retracted): (s) 34
Main winch: (m/min) 75
Aux. winch: (m/min) 75

LIFTING PERFORMANCE

Max. total rated lifting capacity: (T) 125
Min. rated working radius: (m) 3
Turning radius at swing table end: (mm) 4250
Max. load of base boom: (kN.m) 3234
Max. load of fully extended boom: (kN.m) 1380
Longitudinal distance: (m) 7.7
Lateral distance: (m) 7.6
Lifting height of base boom: (m) 13.2
Lifting height with fully extended boom: (m) 50.2
Lifting height with fully extended boom + jib: (m) 67
Boom length (base boom): (m) 13
Boom length (fully extended boom): (m) 50
Boom length (fully extended boom+jib): (m) 66

OTHERS

Telescoping balance valve: Hydrocontrol (Italy)
Amplitude-Changing balance valve: Hydrocontrol (Italy)
Lifting balance valve: Hydrocontrol (Italy)
Servo handle: Hydrocontrol (Italy)
Hydraulic proportional control valve: Eaton (USA)
Wire rope: Pfeifer (Germany)
Hose reel: Demac (Germany)
Load indicator: Pal-Fin



Mercedes-Benz



POWERPLUS
POWERPLUS GROUP INC., USA

ALL TERRAIN CRANE

TECHNICAL SPECIFICATIONS

LOAD CHART

Working Radius (m)	Boom (m)									
	Full-extend outrigger and with 5 th outrigger, boom working at 360°range									
	13		22.25		31.5		40.75		50	
	Lifting weight (kg)	Lifting height (m)	Lifting weight (kg)	Lifting height (m)	Lifting weight (kg)	Lifting height (m)	Lifting weight (kg)	Lifting height (m)	Lifting weight (kg)	Lifting height (m)
3.0	125000	13.2								
3.5	108000	13.0								
4.0	95000	12.8	60000	22.8						
4.5	81000	12.5	60000	22.7						
5.0	75000	12.2	60000	22.6	33000	32.0				
6.0	59000	11.6	51800	22.2	33000	31.8				
7.0	50000	10.7	41000	21.8	33000	31.5	20000	41.2		
8.0	43200	9.7	33500	21.3	29800	31.2	20000	40.9		
9.0	35500	8.3	28600	20.8	26000	30.8	20000	40.6	13000	50.2
10.0	25200	6.5	23200	20.2	23200	30.5	20000	40.4	13000	50.0
11.0			18600	19.5	20600	30.1	18600	40.0	13000	49.7
12.0			15200	18.8	17600	29.7	17000	39.6	13000	49.4
14.0			10200	17.0	12600	28.6	13600	38.9	11200	48.8
16.0			7000	14.6	9400	27.3	10200	38.0	9800	48.1
18.0			4800	11.4	7000	25.8	7800	37.0	8500	47.3
20.0					5200	24.1	6200	35.8	6800	46.4
22.0					3800	21.8	4800	34.4	5400	45.3
24.0					2700	19.3	3700	32.9	4200	44.2
26.0					1800	16.0	2800	31.1	3400	42.9
28.0					1000	11.3	2100	29.1	2600	41.5
30.0							1400	26.8	2000	39.9
32.0							900	24.0	1500	38.2
34.0									1000	36.2
36.0									600	34.0
I Cylinder	0		9.25		9.25		9.25		9.25	
II Cylinder	0		0		3.083		6.167		9.25	
Min.Angle	-2°		-2°		-2°		26°		38°	
Ratio	14		9		5		3		3	
Hook	Main hook: 125T		Hook: 60T							

ALL TERRAIN CRANE

TECHNICAL SPECIFICATIONS

LOAD CHART

Boom Angle	Boom+Jib (m)			
	Full-extend outrigger and without 5 th outrigger, boom working at the side and rear or full-extend outrigger with 5 th outrigger, boom 360°working			
	50.0+9.5		50.0+16.0	
	5°	30°	5°	30°
82°	6000	2500	4000	1300
80°	6000	2500	4000	1300
78°	5500	2400	3600	1200
76°	5000	2300	3200	1150
74°	4500	2200	3000	1100
72°	4000	2100	2700	1050
70°	3700	2050	2500	1000
68°	3400	1950	2400	950
66°	3200	1900	2200	900
64°	2900	1850	2100	850
62°	2400	1700	1800	800
60°	2000	1600	1500	750
58°	1600	1350	1200	700
56°	1400	1150	800	400
54°	1100	900		
I Cylinder	9.25m		9.25m	
II Cylinder	9.25m		9.25m	
Min. Angle	46°	48°	50°	54°
Ratio	1			
Hook	Auxiliary hook: 6T			

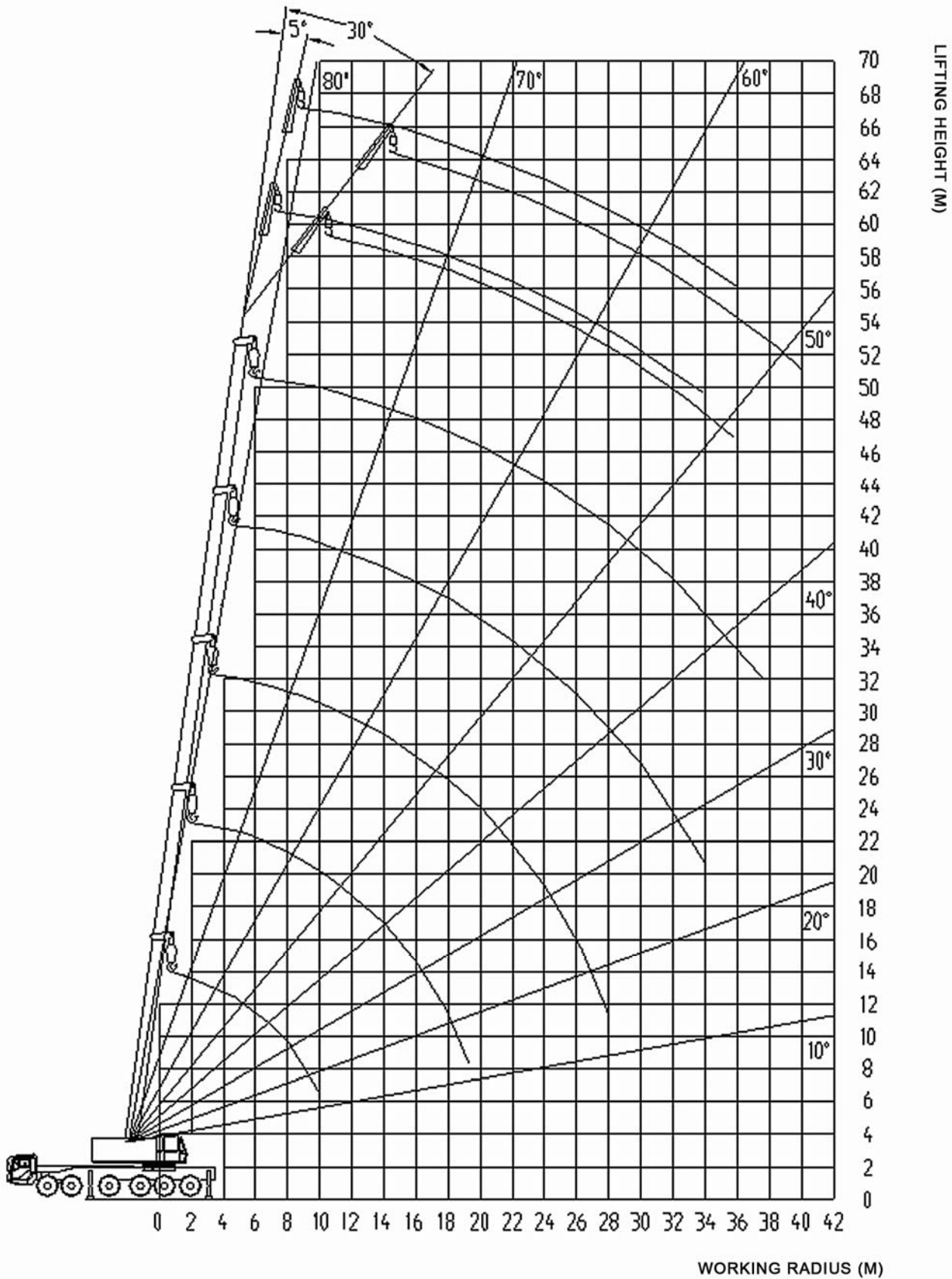


POWERPLUS
POWERPLUS GROUP INC., USA

ALL TERRAIN CRANE

TECHNICAL SPECIFICATIONS

LOAD CHART



POWERPLUS
POWERPLUS GROUP INC., USA

As our products are upgraded periodically, we reserve all rights to change any information without prior notice.

www.powerplus.us

International Division

POWERPLUS GROUP PTE. LTD.

Powerplus Building
39 Ubi Crescent, Singapore 408587
Tel: (65) 63399333
Fax: (65) 63399933
Email: enquiry@powerplus.us

Research & Development Facility

POWERPLUS GROUP INC., U.S.A.

2130 N. Arrowhead Avenue,
San Bernardino, CA 92405, USA
Tel: (1) 909 300 3333
Fax: (1) 909 323 3333
Email: hq@powerplus.us

Distributed By:

 **POWERPLUS** is the registered TM of  **POWERPLUS GROUP INC., USA**
In the United States of America & Worldwide

All rights of manufacturer and of this book reserved. Unauthorized duplication is a violation of application law.