



POWERPLUS[®]
POWERPLUS GROUP INC., USA



ROUGH TERRAIN CRANE
PRTC250S-V

ROUGH TERRAIN CRANE

TECHNICAL SPECIFICATIONS

SPECIFICATION

Overall Length:(mm) 12000
Overall Width: (mm) 2750
Overall Height: (mm) 3650
GVM: (kg) 26400
Wheelbase: (mm) 3600
Min. turning radius: (m) 9.65
Approach angle: (°) 18
Depart angle: (°) 18
Boom+Jib: 4+1
Ground clearance: (mm) 315
Tread: (mm) 2250
Max. Travel Speed: (km/h) 40
Max. Rated Lifting Moment: (kN.m) 697

ENGINE

Model: WP6G190E330
Rated Power: (HP) 190

TRANSMISSION

Type: Electrical controlled shifting
No. of Gear: 4 Forward + 3 Reverse
Drive axle: 4 wheel drive

AXLE

Brand: Meritor
Front axle weight: (kg) 13050
Rear axle weight: (kg) 13350

BRAKE SYSTEM

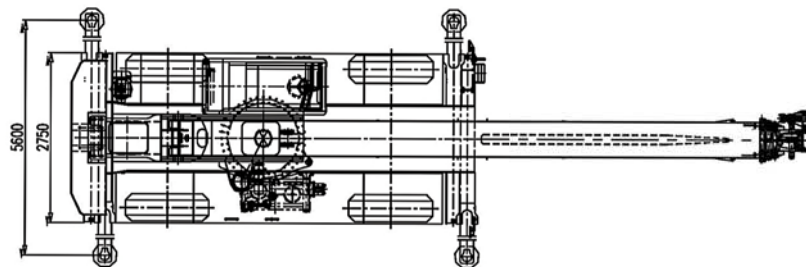
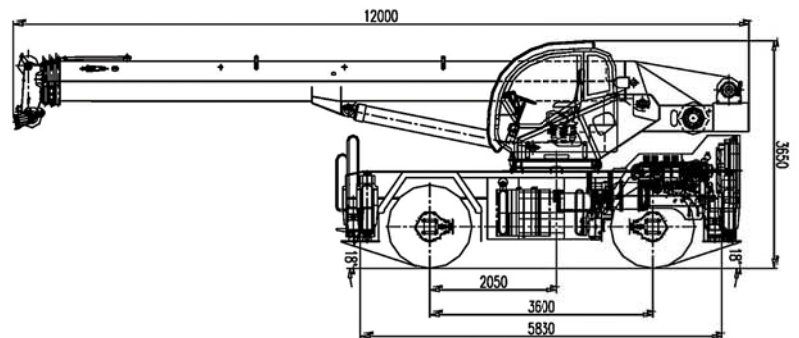
Brand: SAFTM
Service brake: Hydraulic disc brake

PERFORMANCE

Max. total rated lifting load: (T) 25
Base boom length: (m) 9.9
Fully extended boom: (m) 31.2
Base boom lifting height: (m) 10
Fully extended boom lifting height: (m) 30.7
Fully extended boom+jib: (m) 36.1
Outrigger longitudinal span: (m) 5.83
Outrigger lateral span: (m) 5.6
Luffing time (hoist boom): (sec) 55
Luffing time (lower boom): (sec) 36
Telescoping time (extension): 80
Telescoping time (retraction): 48
Max. swing speed: (rpm) 2

TIRE

Front/ Rear: 17.5R25



POWERPLUS
POWERPLUS GROUP INC., USA

ROUGH TERRAIN CRANE TECHNICAL SPECIFICATIONS

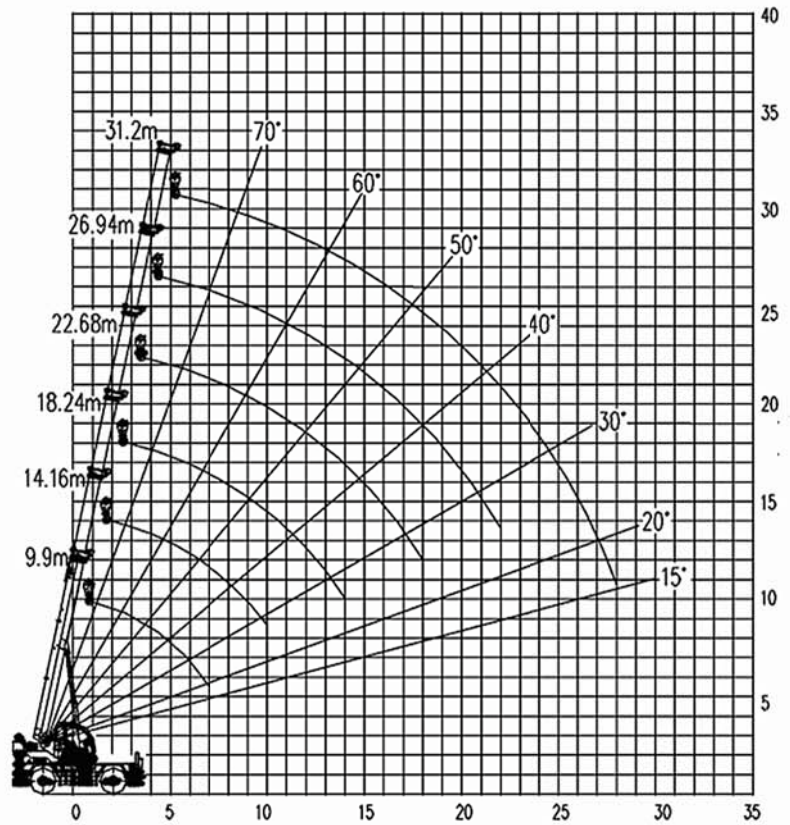
LOAD CHART

Radius (m)	Base Boom 9900(mm)	Mid-extended boom length 14160(mm)	Mid-extended boom length 18240(mm)	Mid-extended boom length 22680(mm)	Mid-extended boom length 26940(mm)	Fully-extend boom 31200(mm)
	Lifting Weight (Kg)	Lifting Weight (Kg)	Lifting Weight (Kg)	Lifting Weight (Kg)	Lifting Weight (Kg)	Lifting Weight (Kg)
3	25000					
3.5	19500	18000				
4	19300	17000	16000			
4.5	18375	16000	14500			
5	16500	14500	13200	13500		
5.5	13750	13500	12300	12800	12000	
6	11750	12750	10600	11000	11200	
6.5	10000	11125	9300	9600	9800	8500
7	8750	9750	8100	8500	8700	7600
8		7750	6600	6900	7050	6500
9		6375	5400	5700	5900	5700
10		5250	4600	4800	5000	5000
11			3900	4200	4350	4400
12			3400	3600	3800	3900
14			2600	2800	2950	3000
16				2250	2400	2450
18				1850	1950	2050
20					1630	1740
22					1350	1450
24						1200
26						1040
28						900
Rated	8	8	8	6	6	4
Hook weight	261Kg					

Radius (m)	Base boom length 9900(mm)	Mid-extended boom length 14160(mm)	Mid-extended boom length 18240(mm)	Mid-extended boom length 22680(mm)
	Lifting Weight (Kg)	Lifting Weight (Kg)	Lifting Weight (Kg)	Lifting Weight (Kg)
3	8400	8000		
3.5	6500	7350		
4	5160	5950	5900	
4.5	4200	4960	5200	
5	3450	4180	4560	
5.5	2860	3570	3940	4200
6	2400	3060	3430	3600
6.5	2000	2680	3020	3200
7	1670	2340	2670	2900
8		1800	2120	2350
9		1380	1700	1930
10		1060	1360	1580
11			1100	1330
12			900	1100
Rated	6	6	4	4
Hook Weight	261kg			

Radius (m)	Base boom length 9900(mm)	Mid-extended boom length 14160(mm)	Mid-extended boom length 18240(mm)	Mid-extended boom length 22680(mm)
	Lifting Weight (Kg)	Lifting Weight (Kg)	Lifting Weight (Kg)	Lifting Weight (Kg)
3	10000			
3.5	8300	9000		
4	6400	7800		
4.5	5200	6400	6500	
5	4300	5300	5600	
5.5	3500	4500	4800	5200
6	2900	3800	4100	4500
6.5	2500	3000	3500	3800
7	2100	2700	3100	3350
8		2400	2800	3100
9		2000	2400	2650
10		1600	1900	2100
11		1200	1500	1700
12			1300	1450
Rated	6	6	4	4
Hook weight	261Kg			

LIFTING CHART



NOTE

- 1) The rated lifting load value given in the table is the maximum lifting capacity when the crane is set on solid and level ground. The load should not exceed 75 % of the tip-over load.
- 2) The total rated lifting load given in the table includes the weight of hook and slings.
- 3) The working radius given in the table is the actual value including the deformation amount of the boom, so lifting operation should be carried out as per working radius.
- 4) 75 % of the tip-over load takes into account wind force 6, i.e. lifting operation still can be carried out with fully-extended outriggers when the wind pressure reaches 125N/m², but lifting operation with tyres or traveling with load are prohibited.



POWERPLUS®
POWERPLUS GROUP INC., USA

www.powerplus.us

International Division

POWERPLUS GROUP PTE. LTD.
Powerplus Building
39 Ubi Crescent, Singapore 408587
Tel: (65) 63399333
Fax: (65) 63399933
Email: enquiry@powerplus.us

Research & Development Facility

POWERPLUS GROUP INC., U.S.A.
1521 East Grand Avenue,
California 91766, USA
Tel: (1) 909 6225 888
Fax: (1) 909 6225 828
Email: hq@powerplus.us

Distributed By:

 **POWERPLUS** is the registered TM of  **POWERPLUS GROUP INC., USA**
in the United States of America & Worldwide

All rights of manufacturer and of this book reserved. Unauthorized duplication is a violation of application law.