

www.powerplus.us



OVER
48
YEARS OF TRUST



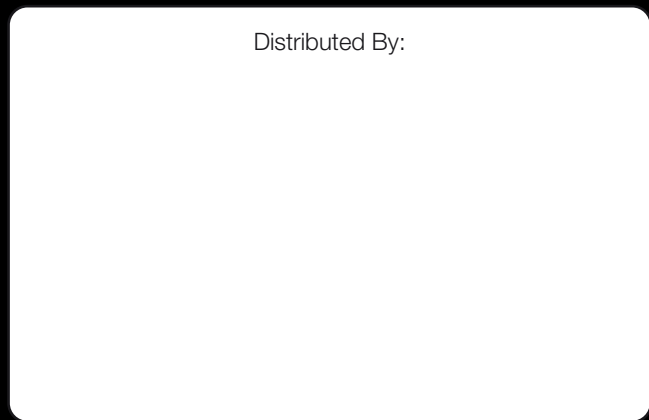
International Division

POWERPLUS GROUP PTE. LTD.
Powerplus Building
39 Ubi Crescent, Singapore 408587
Tel: (65) 63399333
Fax: (65) 63399933
Email: enquiry@powerplus.us

Research & Development Facility

POWERPLUS GROUP INC., U.S.A.
2130 N. Arrowhead Avenue,
San Bernardino, CA 92405, USA
Tel: (1) 909 300 3333
Fax: (1) 909 323 3333
Email: hq@powerplus.us

Distributed By:



POWERPLUS is the registered TM of POWERPLUS GROUP INC., USA
In the United States of America & Worldwide

All rights of manufacturer and of this book reserved. Unauthorized duplication is a violation of application law.

Part of: WORLDWIDE TECHNO-EQUIPMENT GROUP (1973) PTE. LTD.

DUMP TRUCK

PD3960Z-II (530 HP/AT)

CORPORATE OVERVIEW

POWERPLUS GROUP INC., USA, a leading global manufacturer of a comprehensive range of construction equipment, is part of Worldwide Techno-Equipment Group (1973) Pte Ltd. Established since 1973, POWERPLUS GROUP has evolved into a world-renowned organization that offers machinery unparalleled in price, quality and performance.

POWERPLUS machinery is manufactured with enhanced capacities to exceed even the most stringent international standards of quality and safety. With the aim of producing machinery that is able to withstand even the most extreme climatic conditions and rugged terrains, POWERPLUS Research & Development team which has its Headquarters in the United States, has been the backbone behind all its innovative engineering solutions.

Optimizing the best of technology from the United States, Europe and Japan, POWERPLUS machinery is configured to its ideal technical capabilities. A multinational team of engineers analyzes the data collected from our network of distributors worldwide and are on the constant lookout for ways to maximize the life-span of POWERPLUS machinery.

Today the Company's clientele spans over 100 countries across 6 continents.

At the forefront of setting quality standards, every POWERPLUS machine undergoes a technical review after 2 years and is tested rigorously before a new model is churned out of its production facility.

With an emphasis on delivering value and excellent after-sales service to our customers, the POWERPLUS experience outshines and outclasses its competitors in all aspects.



ERGONOMICALLY DESIGNED FOR COMFORT AND INCREASED PRODUCTIVITY

POWERPLUS Dump Truck cabins are shock and noise resistant to reduce operator fatigue. They also come equipped with an adjustable suspension seat, MP3 player and air-conditioning for prolonged working comfort.

What's more, a streamlined dashboard and wide operational view provides both ease of use and improved safety when in operation.



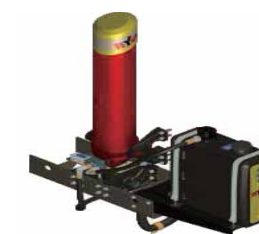
ENGINEERED FOR OPTIMAL DURABILITY



• ENGINE
Optimized performance, proven reliability, fuel efficiency.



• TRANSMISSION
Auto transmission, high reliability & efficiency, excellent acceleration performance.



• LIFTING DEVICE
HYVA hydraulic lifting system, powerful lifting performance.



• MAIN FRAME
Strengthened chassis frame built to increase durability.



• AXLE ASSEMBLY
Robust single casting axle housing, double reduction. High torque efficiency & reliability.



• SAFETY

Roll Over Protection System (ROPS) and Falling Object Protection System (FOPS).



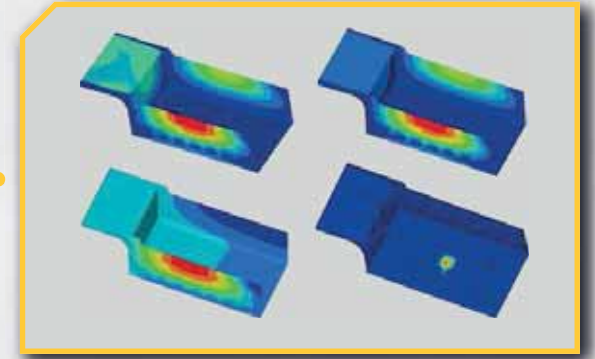
• THROUGH BEAM STRUCTURE

Anti-collision beam, bumper and through beam structure designed with safety as the first priority.



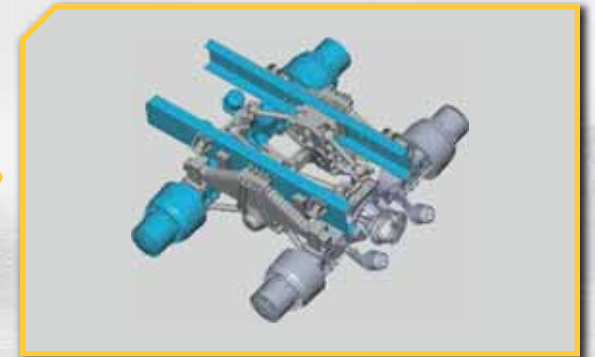
• HYDRAULIC RETARDER (OPTIONAL)

Transmission combined with hydraulic retarder can reduce the speed of the truck when going down a long slope, reduces the wear of braking components and extend tire life.



• CARGO BODY

High tensile strength abrasion resistant steel.



• SUSPENSION

Leaf spring balance rear suspensions help to adapt to off-road conditions. Upper and lower double-V type guide structure enables the truck to carry more load with higher reliability.



• STEERING SYSTEM

Double steering system reduces steering oil temperature, resulting in lighter steering operation.



• INTAKE SYSTEM

Three-stage air filter improves filtration efficiency.



• TIRE

Special mining tires with longitudinal and transverse groove design provides excellent comfort, grip and performance.

*Illustration and statements made are based on standard operations which include optional specifications and attachments.

PD3960Z-II

MAIN SPECIFICATIONS		
Kerb Mass	kg	30000
Maximum Laden Mass	kg	60000
GVM	kg	90000
Axle Drive		6x4
Overall Length	mm	9150
Overall Width	mm	3640
Overall Height	mm	3975
Maximum Height Of Lifting Cargo Body	mm	8370
Maximum Angle Of Lifting Cargo Body	°	53
Gradeability	%	32
Maximum Speed	km/h	42
Fuel Tank Capacity	L	500
ENGINE		
Model		STEYR WP13G530E310
Rated Power	hp	530
Rated Speed	rpm	2100
Emission Standard		Euro III
CLUTCH		
Type		EATON Ø 430
TRANSMISSION		
Model		POWERPLUS PFC6A250
Gears		6 Forward, 1 Reverse
Type		Auto
HYDRAULIC SYSTEM		
Hydraulic Lifting System		HYVA
Model		Alpha191
Steering Gear		Full hydraulic steering
Lifting Time For Cargo Body	sec	≤33
Falling Time For Cargo Body	sec	≤30

WEIGHT DISTRIBUTION		
Empty Payload		
Front Axle	kg	14000
Rear Axle	kg	16000
Total Weight (50% Fuel)	kg	30000
Heavy Payload		
Front Axle	kg	20000
Rear Axle	kg	35000+35000
Total Weight	kg	90000
Axle Type		Double reduction
STEERING SYSTEM		
Type		Full hydraulic steering system
BRAKE SYSTEM		
Service Brake		Pneumatic pressure, drum brake
Parking Brake		Double circuit spring energy storage braking
Braking Distance		<15m (V=30km/h)
DUMP BODY		
Bottom Plate Material / Thickness	mm	18 (NM400)
Rear Plate Material / Thickness	mm	10 (T700)
Front Plate Material / Thickness	mm	10 (T700)
Side Plate Material / Thickness	mm	10 (NM400)
Loading Volume	m³	30
TIRE		
Tire Size		14.00-25-36PR
Rims Size		10.00-25
CABIN		
Type		POWERPLUS continental interior styling with air conditioning, MP3/Radio.

