



POWERPLUS[®]
POWERPLUS GROUP INC., USA



BACKHOE LOADER
PBL488T-II

CORPORATE OVERVIEW

POWERPLUS GROUP INC., USA, a leading global manufacturer of a comprehensive range of construction equipment, is part of Worldwide Techno-Equipment Group (1973) Pte Ltd. Established since 1973, POWERPLUS GROUP has evolved into a world-renowned organization that offers machinery unparalleled in price, quality and performance.

POWERPLUS machinery is manufactured with enhanced capacities to exceed even the most stringent international standards of quality and safety. With the aim of producing machinery that is able to withstand even the most extreme climatic conditions and rugged terrains, POWERPLUS Research & Development team which has its Headquarters in the United States, has been the backbone behind all its innovative engineering solutions.

Optimizing the best of technology from the United States, Europe and Japan, POWERPLUS machinery is configured to its ideal technical capabilities. A multinational team of engineers analyzes the data collected from our network of distributors worldwide and are on the constant lookout for ways to maximize the life-span of POWERPLUS machinery.

Today the Company's clientele spans over 100 countries across 6 continents.

At the forefront of setting quality standards, every POWERPLUS machine undergoes a technical review after 2 years and is tested rigorously before a new model is churned out of its production facility.

With an emphasis on delivering value and excellent after-sales service to our customers, the POWERPLUS experience outshines and outclasses its competitors in all aspects.



VALUE-ADDED MACHINES WITH MAXIMIZED DURABILITY

POWERPLUS Backhoe Loaders are the most versatile equipment able to satisfy every operational need, be it for loading materials or digging trenches. By getting one backhoe loader you are getting two machines in one, saving operational cost and improving efficiency. Thus, making backhoe loaders so popular for operations in construction, agriculture, or even road building industries.

The main POWERPLUS Backhoe Loaders' higher efficiency and effectiveness formula rest in the careful selection of premium parts and components from all over the world. Designed to perform, POWERPLUS Backhoe Loaders are manufactured with high international standards that are built to withstand harsh working conditions.

OPERATOR'S COMFORT AND INCREASED PRODUCTIVITY

- Noise and shock reduction cabin for better comfort and reduced operator's fatigue.
- Wide operational view with improved visibility to perform even high detailed operations.
- ROPS/FOPS cabin with personalized amenities including POWERPLUS adjustable suspension seat, MP3 player, and air-conditioning.
- Cabin designed with wide leg-room space and in-cab storage – in order to increase operator's comfort. Consequently, higher operator's comfort results in better productivity and efficiency of work in general.



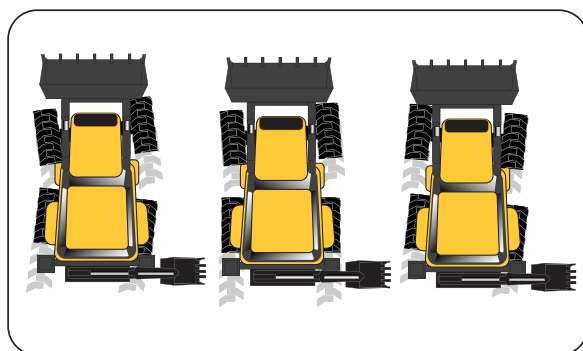
PERKS FOR END-USERS

- CARRARO axles with excellent performance and reliability.
- 4 Wheel Steering and Crab Steer
- Advanced manufacturing process and thorough quality control before any machine leaves factory premises ensuring longer backhoe loader's life expectancy.
- Wide range of additional attachments and customized approaches make POWERPLUS Backhoe Loaders suitable for any operational needs.
- Routine check-up, daily preparation for operations and even scheduled maintenance service become an easy task with increased access to the backhoe loader parts and components.
- Increased maneuverability for the hassle-free drive around the site.



MINIMIZED ENVIRONMENTAL IMPACT

- Backhoe loaders are manufactured according to international safety and environmental standards.
- Fuel efficiency and good control systems for low emission levels.
- Up to 90% of recyclable parts and quality parts for a longer lifespan.



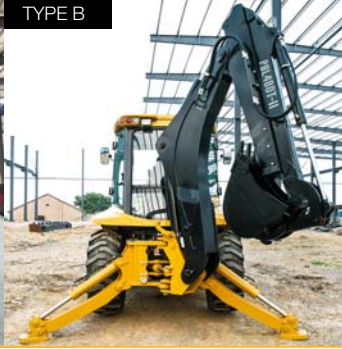
BACKHOE LOADER		PBL488T-II
Operating Weight	kg	10500
Wheelbase	mm	2050
Minimum Ground Clearance	mm	450
Dimension (LxWxH)	mm	6011 x 2480 x 3142 (A) 6011 x 2480 x 3900 (B)
PERFORMANCE		
LOADER		
Bucket Capacity	m ³	1.2
Breakout Force	kN	47
Loading Capacity	kg	2500
Bucket Dumping Height	mm	3077
Bucket Dumping Distance	mm	870
BACKHOE		
Bucket Capacity	m ³	0.3
Maximum Digging Depth	mm	3489
Bucket Digging Force	kN	50
TRAVEL		
No. Of Gears		4 Forward & 4 Reverse
Maximum Traveling Speed	km/h	38
ENGINE		
Model		CUMMINS 4BTA3.9-C100
Rated Power	hp	100
Rated Speed	rpm	2200
TRANSMISSION SYSTEM		
Brand		POWERPLUS
Transmission Type		Electronic
STEERING		
System Type		Hydraulic Steering
System Pressure	MPa	14
Steering Angle	° +/-	35
Min. Turning Radius	mm	690
Mode		4 Wheel Steering and Crab Steer
AXLE		
Model		CARRARO
Front Axle Load	T	10.00 (Dynamic) 25.00 (Static)
Rear Axle Load	T	7.50 (Dynamic) 18.75 (Static)
TIRE		
Front		16.9-28
Rear		16.9-28
BRAKE SYSTEM		
Service Brake		Wet Type Brake
Parking Brake		Manual

BOOM TYPE

TYPE A

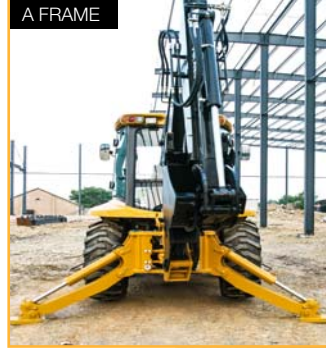


TYPE B



OUTRIGGER TYPE

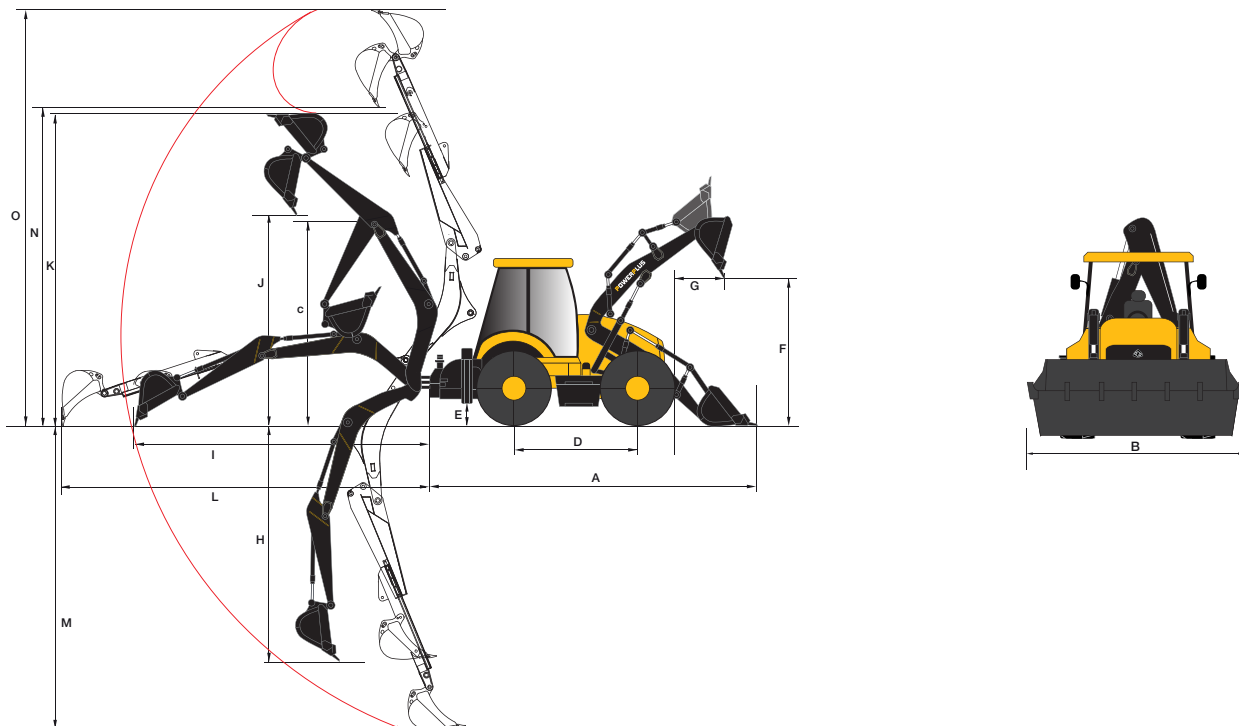
A FRAME



SIDE SHIFT



DIMENSIONS



DIMENSIONS			Boom Type A		Boom Design B	
			Standard	Telescopic Arm	Standard	Telescopic Arm
A	Length	mm	6011	6011	6011	6011
B	Width	mm	2480	2480	2480	2480
C	Height	mm	3142	3142	3900	3900
D	Wheelbase	mm	2334	2334	2340	2340
E	Minimum Ground Clearance	mm	450	450	450	450
F	Bucket Dumping Height	mm	3077	3077	3077	3077
G	Bucket Dumping Distance	mm	1548	1548	1548	1548
H	Digging Depth	mm	3489	3283	3791	4127
I	Maximum Reach	mm	5406.7	5420	5260	5634
J	Loadover Height	mm	3838.5	4048	3742	4255
K	Operating Height	mm	5523.6	5508	5522	5966
Fully Extended						
L	Maximum Reach	mm	-	6347.67	-	6509
M	Maximum Digging Depth	mm	-	4264	-	5070
N	Maximum Loadover Height	mm	-	4670.7	-	5966
O	Operating Height	mm	-	6345.4	-	6692

OPTIONAL ATTACHMENTS



*Availability of equipment may varies across different regions. Kindly consult your POWERPLUS territory sales personnel for details.

GLOBAL NETWORK DISTRIBUTION

POWERPLUS is committed to creating long-term value for its customers, partners and stakeholders. Our Service Centers are strategically located in major construction, industrial and manufacturing hubs in key regions around the world.

Given our years of experience in the industry, it is no doubt that our customers can always rely on us for the expertise, services and solutions we provide. Most importantly, you will find our after-sales service a satisfying experience at all our Service Centers worldwide.



DURABILITY, RELIABILITY & AFFORDABILITY

POWERPLUS Parts and Service Centers provides a convenient channel for you to order the original spare parts through a network of highly certified OEM manufacturers and an effective distribution of spare parts through our global network of vendors.

From determining the correct part number to locating and ordering, we are committed to working round-the-clock for timely solutions and delivery to ensure we serve our customers promptly and efficiently.

Coupled with affordable parts prices and high interchangeability across the POWERPLUS machinery range, we take pride in being able to offer value to our customers with cost-effective solutions. Most importantly, you are able to retain the machines with high residual value to enhance your return on investment.



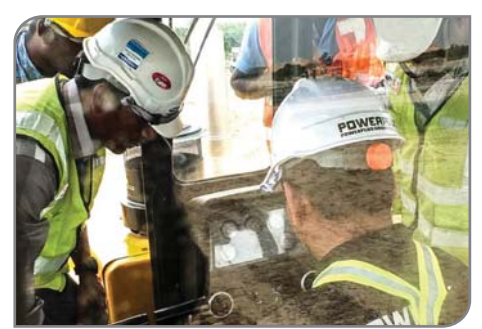
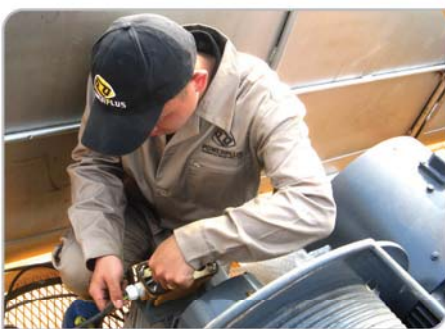
SERVICE

Delivering Unsurpassed Customer Service - Because You Matter.

Our dedicated team of customer service executives, skilled engineers and technicians are well-trained to ensure timely and propitious support throughout the customer life cycle. With a comprehensive dealer network coverage and service facilities support, POWERPLUS dedicated team of account managers and service teams from the Customer Service Charter are trained to respond to your queries and requests promptly and efficiently.

To deliver more, our service package includes educating our customers with training, maintenance and servicing to ensure customers are empowered to utilize the machines at its best; therefore optimizing the machine's performance and increasing uptime.

At POWERPLUS, we strive to build and maintain long-term relationships with each and every client based on trust, integrity and professionalism.



www.powerplus.us

International Division

POWERPLUS GROUP PTE. LTD.

Powerplus Building
39 Ubi Crescent, Singapore 408587
Tel: (65) 63399333
Fax: (65) 63399933
Email: enquiry@powerplus.us

Research & Development Facility

POWERPLUS GROUP INC., U.S.A.

2130 N. Arrowhead Avenue,
San Bernardino, CA 92405, USA
Tel: (1) 909 300 3333
Fax: (1) 909 323 3333
Email: hq@powerplus.us

Distributed By:

 **POWERPLUS** is the registered TM of  **POWERPLUS GROUP INC., USA**
In the United States of America & Worldwide

All rights of manufacturer and of this book reserved. Unauthorized duplication is a violation of application law.